



LANCASTER CHAPTER, INC., NATIONAL RAILWAY HISTORICAL SOCIETY

VOLUME 43 NUMBER 13

DISTRICT 2 - CHAPTER WEBSITE: WWW.NRHS1.ORG

SPECIAL 2012

BEST OF THE BEST 2012 - THE YEAR IN PHOTOS



AUTUMN ON THE NORTHEAST CORRIDOR

AMTRAK NORTHEAST REGIONAL TRAIN No. 84 with HHP8 No. 661 NORTHBOUND ON NUMBER 2 TRACK AT THE BIG CURVE AT STEMERS RUN, MARYLAND ON OCTOBER 22, 2012. COPYRIGHTED PHOTO BY GEORGE PITZ, AMTRAK - USED WITH PERMISSION.

© LANCASTER CHAPTER, NATIONAL RAILWAY HISTORICAL SOCIETY 2012. ALL RIGHTS RESERVED.

NO PART OF THIS PUBLICATION MAY BE REPRODUCED OR DISTRIBUTED IN ANY FORM WITHOUT THE WRITTEN CONSENT OF THE EDITOR.

THE POWER DIRECTOR - 2012 SPECIAL EDITION



AMTRAK'S "GREAT DOME" CAR

IN 2012, AMTRAK EXTENSIVELY OPERATED ITS ONLY REMAINING DOME CAR, NO. 10031, THE OCEAN VIEW, ON THE ADIRONDACK, CARDINAL AND HIAWATHA CORRIDOR TRAINS BETWEEN CHICAGO AND MILWAUKEE - EVEN VENTURING TO INDIANAPOLIS, INDIANA ON THE CARDINAL AND HOOSIER STATE TRAINS.

THE BUDD COMPANY BUILT THE CAR IN 1955 AS GREAT NORTHERN NO. 1391, ONE OF SIX FULL-LENGTH DOMES THE FOR THE CHICAGO-SEATTLE/PORTLAND EMPIRE BUILDER OPERATED BY GREAT NORTHERN RAILWAY IN PARTNERSHIP WITH THE CHICAGO, BURLINGTON & QUINCY AND SPOKANE, PORTLAND & SEATTLE RAILWAY.

TRAIN NO. 68, THE ADIRONDACK, HEADS SOUTH ALONG LAKE CHAMPLAIN WITH PHASE III P42DC 145 AND DOME CAR 10031 AHEAD OF THE NORMAL CONSIST OF AMFLEET CARS NEAR PORT KENT, NEW YORK - PHOTO BY KEVIN BURKHOLDER.

AUTUMN ON THE NORTHEAST CORRIDOR



AMTRAK ACELA EXPRESS TRAIN NO. 2151 WITH POWER CAR 2039 LEADING GOES UNDER THE 836 SIGNALS ON NO. 3 TRACK SOUTHBOUND AT BENGIES, MD. ON OCTOBER 19, 2012. COPYRIGHTED PHOTO BY GEORGE PITZ, AMTRAK - USED WITH PERMISSION.



AMTRAK NORTHEAST REGIONAL TRAIN No. 141 WITH RE-MANUFACTURED AEM7 No. 916 COMES SOUTHBOUND AROUND THE CURVE ON No. 3 TRACK AT STEMMERS RUN, Md. ON OCTOBER 22, 2012. COPYRIGHTED PHOTO BY GEORGE PITZ, AMTRAK - USED WITH PERMISSION.



NORFOLK SOUTHERN SD70ACE HERITAGE UNIT No. 1072 PAINTED IN ILLINOIS TERMINAL COLORS LEADS A COAL TRAIN SOUTHBOUND AT BENGIES, Md. ON OCTOBER 19, 2012. COPYRIGHTED PHOTO BY GEORGE PITZ, AMTRAK - USED WITH PERMISSION.

TWILIGHT OF THE AEM7'S



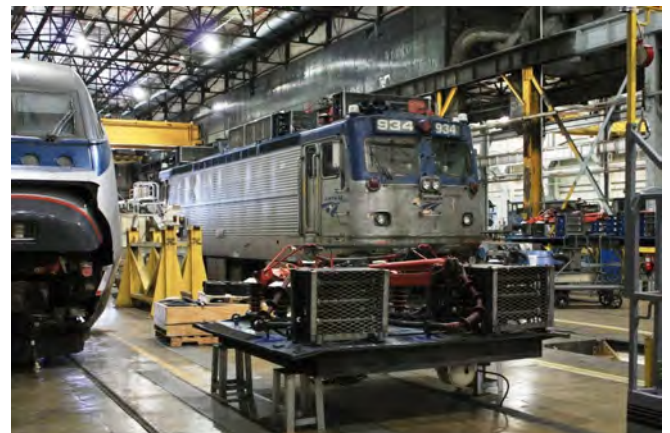
SOUTHBOUND Amtrak Northeast Regional Train No. 173 WITH RE-MANUFACTURED AEM7 No. 929 SHOWING HER AGE, COMES TO A STOP ON No. 3 TRACK AT WILMINGTON, DEL. ON OCTOBER 22, 2012. COPYRIGHTED PHOTO BY GEORGE PITZ, AMTRAK - USED WITH PERMISSION.



AMTRAK TRAIN No. 56, THE VERMONT, WITH RE-MANUFACTURED AEM7 No. 920 PASSES UNDER THE 857 SIGNALS ON No. 2 TRACK AT MIDDLE RIVER, Md. ON SEPTEMBER 14, 2012. COPYRIGHTED PHOTO BY GEORGE PITZ, AMTRAK - USED WITH PERMISSION.



AMTRAK DC AEM7'S 933, 911, 930 AND 922 RETIRED, STORED AND CANNIBALIZED AT WILMINGTON, DEL. ON AUGUST 26, 2012. COPYRIGHTED PHOTO BY GEORGE PITZ, AMTRAK - USED WITH PERMISSION.



AMTRAK RE-MANUFACTURED AEM7 No 934 IN THE SHOP BAY AT WILMINGTON, DEL. DYNAMIC BRAKE GRID ROOF PANEL IN THE FOREFRONT. AUGUST 26, 2012. COPYRIGHTED PHOTO BY GEORGE PITZ, AMTRAK - USED WITH PERMISSION.

CSX TRANSPORTATION

NOW IN ITS 70TH YEAR, THE CSX TRANSPORTATION SANTA TRAIN RUNS ALONG A 110-MILE ROUTE THROUGH APPALACHIA, MAKING 14 STOPS IN KENTUCKY, VIRGINIA AND TENNESSEE. THE SANTA TRAIN IS SPONSORED BY CSX, DIGNITY U WEAR, FOOD CITY AND THE KINGSPORT CHAMBER OF COMMERCE. THE SANTA TRAIN BEGINS ITS JOURNEY IN PIKEVILLE, KY., AND ROLLS TO A FINAL STOP IN KINGSPORT, TENN. ON ARRIVAL IN KINGSPORT, SANTA DEPARTS THE TRAIN AND MOUNTS THE TOP LADDER OF A SPARKLING RED FIRE ENGINE TO ANCHOR KINGSPORT'S OWN YULETIDE PARADE. PHOTOS BY ERICA YOON.



SIX FORMER SEPTA BUDD SILVERLINER II'S WERE PHOTOGRAPHED EASTBOUND THROUGH WEST TRENTON, NEW JERSEY STATION ON CSX TRAIN C770 ON NOVEMBER 21, 2012, AROUND 11:15 AM. THEY WERE EX-PRR 212, 219, AND 259 AND EX-READING 9006, 9007, AND 9012. PHOTOS BY BOB VOGEL - USED WITH PERMISSION.



CSX No. 6248, AN EMD GP38-2S LEADS THE "LAST RUN" OF THESE EX-PRR AND READING COMPANY BUDD SILVERLINER II CARS, REPLACED BY SEPTA'S NEW SILVERLINER V'S.



SPAX 9007 PULLS UP THE MARKERS ON CSX TRAIN C770 AT TRENT INTERLOCKING ON CSX'S TRENTON LINE.

NORFOLK SOUTHERN HERITAGE FLEET



NORFOLK SOUTHERN'S FIRST HERITAGE UNIT, No 8098 - A GE MODEL ES44AC, IN CONRAIL COLORS AT JUNIATA LOCOMOTIVE SHOP, MARCH 25, 2012.



THE SECOND HERITAGE UNIT, No. 8099K HONORS THE SOUTHERN RAILWAY AT CHATTANOOGA, TENN. WITH N&W No. 1776 ON MARCH 20, 2012.



NORFOLK SOUTHERN'S THIRD HERITAGE UNIT, No. 8100, A GE MODEL ES44AC, IN THE NICKEL PLATE ROAD PAINT SCHEME AT DUSK IN JUNIATA ON MARCH 28, 2012.



AN ELECTRIFYING PHOTO OF NORFOLK SOUTHERN'S FOURTH HERITAGE UNIT, No. 8101, IN CENTRAL OF GEORGIA COLORS AT DeBUTTS YARD IN CHATTANOOGA, TENN. ON APRIL 5, 2012.



NORFOLK SOUTHERN No. 8103, THE FIFTH HERITAGE UNIT, COMMEMORATING THE NORFOLK & WESTERN RAILWAY, AT ALTOONA, PENN. ON APRIL 10, 2012.



FIVE-STRIPES SCHEME OF THE PENNSYLVANIA RAILROAD ADORNS NORFOLK SOUTHERN No. 8102, THE SIXTH HERITAGE UNIT, AT JUNIATA LOCOMOTIVE SHOP IN ALTOONA, PENN. ON APRIL 22, 2012.



LOOKING LIKE A MODEL RAILROAD, NS No. 8105 IN INTERSTATE COLORS, THE SEVENTH HERITAGE UNIT, PASSES THROUGH NATURAL TUNNEL, VA, ON APRIL 25, 2012.



THE EIGHTH HERITAGE UNIT, No. 8104, IN LEHIGH VALLEY RAILROAD COLORS, IS SHOWN AT ALTOONA, PA. WITH HER NOSE AS ORIGINALLY PAINTED - APRIL 24, 2012.



No. 8104 WITH HER UPDATED NOSE PAINT AT THE JUNIATA PAINT SHOP ON JUNE 11, 2012.



IN THE COLORS OF THE ORIGINAL NORFOLK SOUTHERN, NO. 8114, THE NINTH HERITAGE UNIT, ENJOYS SUNRISE OVER DEBUTTS YARD IN CHATTANOOGA, TENN. ON APRIL 26, 2012.



THE TENTH HERITAGE UNIT AND FIRST SD70ACE, NO. 1065, IN SAVANNAH & ATLANTA COLORS AT PROGRESS RAIL IN MUNCIE, IND. ON MAY 9, 2012.



PAYING HOMAGE TO THE NEW YORK CENTRAL RAILROAD, THE ELEVENTH HERITAGE UNIT, NS NO. 1066, BATHES IN THE SUN AT MUNCIE, IND. ON MAY 21, 2012.



THE TWELFTH HERITAGE UNIT, NS NO. 1067, IS A HOMETOWN FAVORITE IN READING COMPANY COLORS. UNDER A SILVERY MOON AT DUSK IN MUNCIE, IND. ON MAY 23, 2012.



LUCKY 13TH HERITAGE UNIT, NO. 1068, IN ERIE RAILROAD COLORS AT MUNCIE, IND. ON MAY 25, 2012.



NS NO. 1069, THE 14TH HERITAGE UNIT, PROUDLY WEARS THE COLORS OF THE VIRGINIAN RAILWAY, AT MUNCIE, IND. ON JUNE 5, 2012.



THE 15TH HERITAGE UNIT, ADDED LATE TO THE PROGRAM, IS NS No. 8025 IN MONONGAHELA RAILWAY COLORS AT CHATTANOOGA, TENN. ON JUNE 16, 2012.



NS No. 1070, IN WABASH RAILROAD COLORS, IS THE 16TH HERITAGE UNIT. SHOWN AT MUNCIE, IND. ON JUNE 21, 2012.



FRESH OUT OF PROGRESS RAIL'S PAINT SHOP WEARING THE COLORS OF THE JERSEY CENTRAL LINES, NS No. 1071 IS THE 17TH HERITAGE UNIT. SHOWN AT MUNCIE, IND. ON JUNE 22, 2012.



THE 18TH HERITAGE UNIT, JUST OUT OF THE PAINT SHOP IN MUNCIE, IND. IS NS No. 1073, AN SD70ACE, HONORING THE PENN CENTRAL RAILROAD ON JUNE 25, 2012.



THE 19TH HERITAGE UNIT, NS No. 1072, IN THE VIBRANT COLORS OF THE ILLINOIS TERMINAL RAILROAD, BASKS IN THE MORNING SUNSHINE AT MUNCIE, IND. ON JUNE 26, 2012.



THE 20TH AND FINAL HERITAGE UNIT, NS No. 1074 IS JUST OUT OF THE MUNCIE, IND. PAINT BOOTH WEARING THE DELAWARE, LACKAWANNA & WESTERN LIVERY ON JUNE 27, 2012.

NORTH CAROLINA TRANSPORTATION MUSEUM - SPENCER



ALL 20 HERITAGE UNITS POSE FOR A GROUP PHOTO AT THE TURNTABLE ON JULY 2, 2012.



THE MAN BEHIND THE NS PHOTOS. NS VISUAL COMMUNICATIONS SPECIALIST CASEY THOMASON WAITING AT SPENCER, NC FOR TRAIN NO. 960 TO DEPART.

NORFOLK SOUTHERN EMPLOYEE EXCURSIONS



NICKEL PLATE ROAD NO. 765 TAKEN FROM THE MULBERRY STREET OVERHEAD BRIDGE ON AUGUST 19, 2012. PHOTO BY BOB FRIED.



NKP NO. 765 WESTBOUND ON HORSESHOE CURVE, ALTOONA, PA. ON AUGUST 19, 2012. NS PHOTO.

NORFOLK SOUTHERN VETERANS LOCOMOTIVE



UNVEILED ON NOVEMBER 8, 2012, SD60E No. 6920 AT JUNIATA LOCOMOTIVE SHOP. NS PHOTO.



NORFOLK SOUTHERN NO. 6920 AT JUNIATA LOCOMOTIVE SHOP ON NOVEMBER 8, 2012. NS PHOTO.

SEPTA SILVERLINER V



SEPTA TRAIN No. 264 WAITING TO HEAD NORTH ON No. 1 TRACK AT WILMINGTON, DEL ON OCTOBER 22, 2012. COPYRIGHTED PHOTO BY GEORGE PITZ, AMTRAK - USED WITH PERMISSION.



SEPTA SILVERLINER VS ON THE NORTHEAST CORRIDOR AT BRISTOL, PA. ON FEBRUARY 18, 2012. PHOTO BY DAVE HOMER - USED WITH PERMISSION.

MARC - MARYLAND AREA REGIONAL COMMUTER



MARC TRAIN No. 523 WITH HHP8 No. 4915 PUSHING STARTS AWAY FROM MARTINS AIRPORT STATION ON No. 1 TRACK ENROUTE TO BALTIMORE ON NOVEMBER 16, 2012. PHOTO BY GEORGE PITZ, AMTRAK.



MARC TRAIN No. 523 WITH DC AEM7s 4903 AND 4900 PUSHING STARTS UNDER THE 857 SIGNALS ON No. 1 TRACK OF AMTRAK'S PHL-WAS LINE ON SEPTEMBER 14, 2012. PHOTO BY GEORGE PITZ, AMTRAK.



MARC TRAIN No. 520 WITH ENGINE No. 16 MEETS AMTRAK TRAIN No. 91 AT MARTIN AIRPORT STATION ON SEPTEMBER 27, 2012. PHOTO BY GEORGE PITZ, AMTRAK.



MARC TRAIN No. 520 WITH ENGINE No. 29 AT BENGIES, MD. ON OCTOBER 11, 2012. PHOTO BY GEORGE PITZ, AMTRAK.

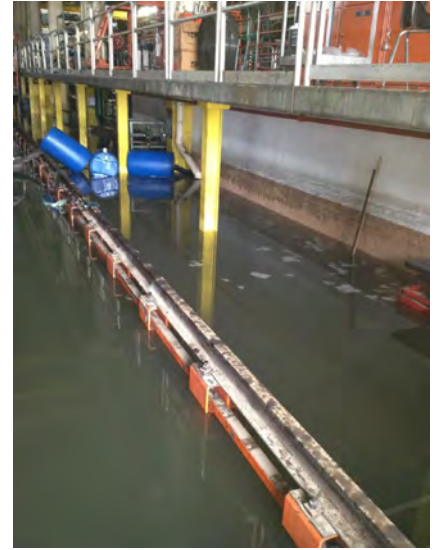
HURRICANE SANDY - OCTOBER 29, 2012



NEW JERSEY TRANSIT BAY HEAD, NJ PIT TRACK



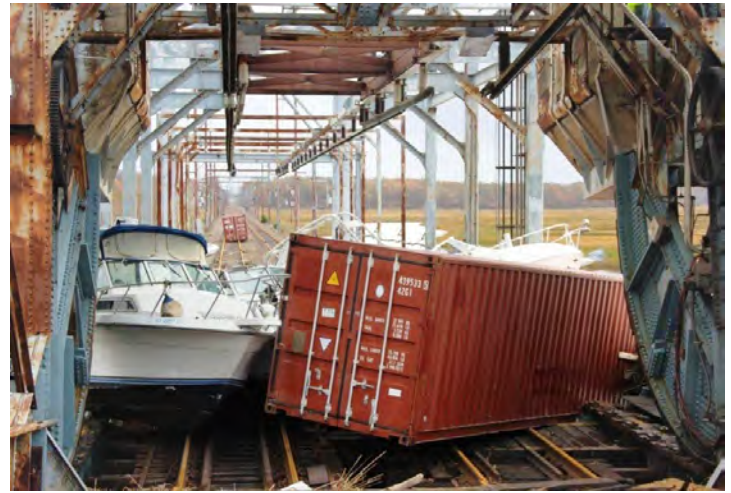
MEADOWS MAINTENANCE COMPLEX CAR SHOP



MEADOWS MAINTENANCE COMPLEX ENGINE HOUSE



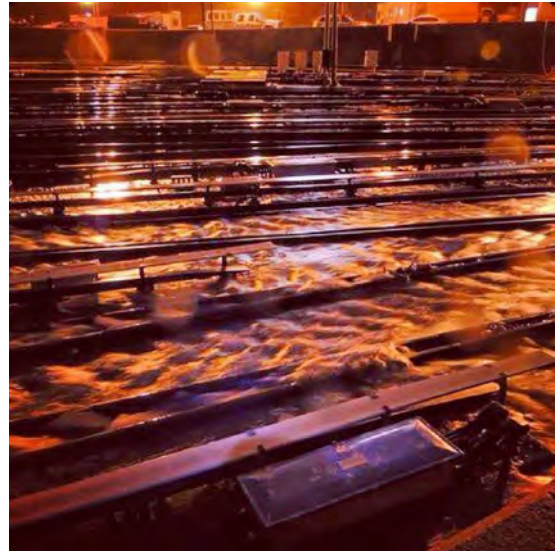
HOBOKEN TERMINAL



MORGAN DRAW BRIDGE ON THE NORTH JERSEY COAST LINE



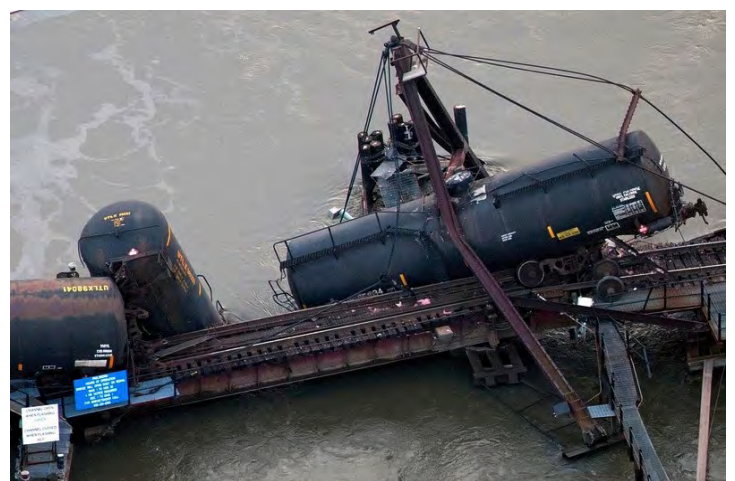
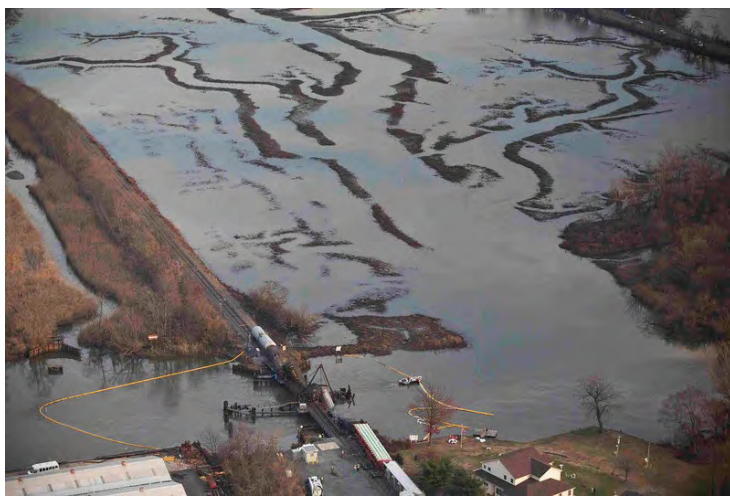
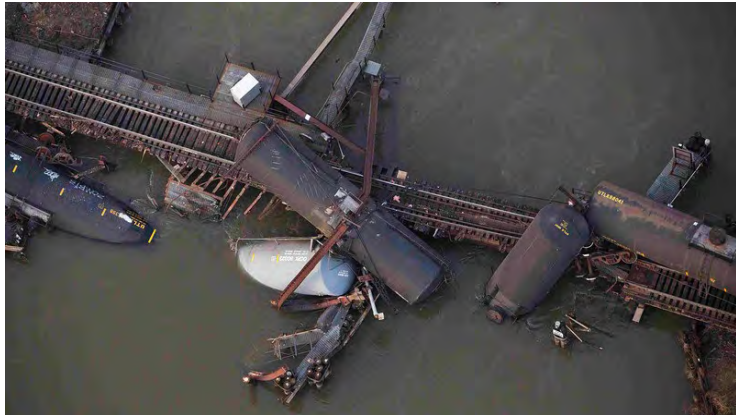
NJT NORTH JERSEY COAST LINE BETWEEN SOUTH AMBOY AND MATAWAN STATIONS.



PENN STATION, NEW YORK

CONRAIL DERAILMENT, PAULSBORO, NEW JERSEY - NOVEMBER 30, 2012

PHOTOS COURTESY OF MERCURY NEWS



CONRAIL SANTA TRAIN TO FREEHOLD, NEW JERSEY - DECEMBER 8, 2012



SANTA TRAIN
 SATURDAY, DEC. 8TH
 12:00 - 2:00 PM
 AT FREEHOLD BUS / TRAIN STATION
 TOYS AND PHOTO FOR ALL KIDS ATTENDING
 SPONSORED BY FREEHOLD BORO PBA 159 AND CONRAIL



SANTA ENTERING FREEHOLD, NJ ON THE FRONT OF CSX GP40-2 No. 4403, EX-CONRAIL No. 3286.



ALL I WANT FOR CHRISTMAS IS....



PHOTOS COURTESY OF KEVIN PAINTER
USED WITH PERMISSION.

LANCASTER CHAPTER BOARD of DIRECTORS

PRESIDENT: TOM SHENK 717-560-1186 TSHENK@NRHS1.ORG
1ST VICE PRESIDENT: RON IRWIN 717-299-6405 RIRWIN@NRHS1.ORG
2ND VICE PRESIDENT: GLENN KENDIG 610-593-6313 GKENDIG@NRHS1.ORG
SECRETARY: DONETTA EBERLY 717-866-5514 DEBERLY@NRHS1.ORG
TREASURER: RICHARD RUTLEDGE 717-741-0205 RRUTLEDGE@NRHS1.ORG
EDITOR: ED MAYOVER 302-834-3662 EMAYOVER@NRHS1.ORG
HISTORIAN: EVAN RUSSELL, JR. 610-269-7054 ERUSSELLJR@NRHS1.ORG
CHAPLAIN: DORIS GEESEY 717-347-7637 DGESEY@NRHS1.ORG
1ST DIRECTOR: CINDY KENDIG 610-593-6313 CKENDIG@NRHS1.ORG
2ND DIRECTOR: TOM McMASTER 717-274-5325 TMcMASTER@NRHS1.ORG
NATIONAL REP: FRED KURTZ 717-625-1204 FKURTZ@NRHS1.ORG

BEST OF THE BEST
2012 - THE YEAR IN PHOTOS

**LANCASTER CHAPTER
 NATIONAL RAILWAY
 HISTORICAL SOCIETY**
 10 RAILROAD AVENUE
 CHRISTIANA, PA 17509-1416
 PHONE: 610-593-4968



CHAPTER WEBSITE: WWW.NRHS1.ORG

THE LANCASTER DISPATCHER IS PUBLISHED MONTHLY AS THE NEWSLETTER OF THE LANCASTER CHAPTER, NRHS AND IS MAILED TO EACH MEMBER OF THE CHAPTER AS ONE OF THE BENEFITS OF MEMBERSHIP. ANNUAL MEMBERSHIP DUES ARE \$56 (INCLUDES BOTH LANCASTER CHAPTER AND NATIONAL). OPINIONS AND POINTS OF VIEW EXPRESSED HEREIN ARE THOSE OF THE EDITOR, STAFF OR CONTRIBUTORS AND NOT NECESSARILY THOSE OF THE MEMBERSHIP, OFFICERS, OR THE NRHS. THE DEADLINE FOR ALL ITEMS SUBMITTED IS THE FOURTH MONDAY OF THE PRECEDING MONTH. ADDRESS CHANGES OR CORRECTIONS SHOULD BE SENT TO: FRED KURTZ, 668 SNYDER HILL RD., LITITZ, PA 17543-8945 OR EMAIL: FKURTZ@NRHS1.ORG

FIRST CLASS MAIL !!!
PLEASE DELIVER PROMPTLY !!!

LANCASTER CHAPTER, N.R.H.S.
10 RAILROAD AVENUE
CHRISTIANA, PA 17509-1416

Forwarding and Address Correction Requested

**FIRST
 CLASS
 MAIL**