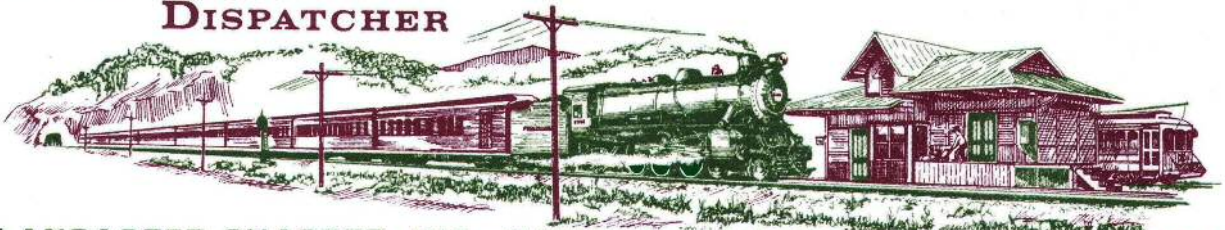


LANCASTER  
DISPATCHER

1935 - 2016

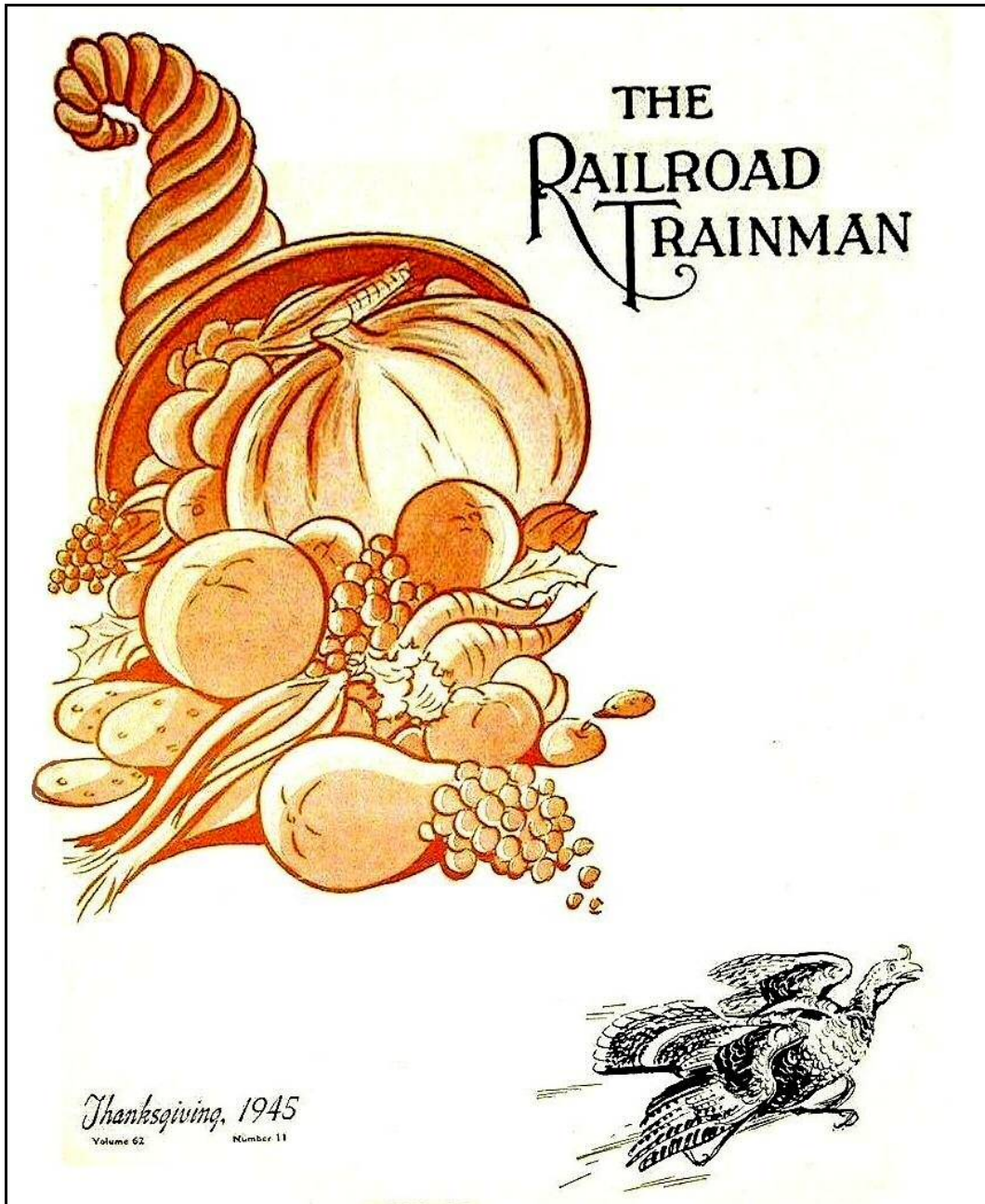


LANCASTER CHAPTER, INC., NATIONAL RAILWAY HISTORICAL SOCIETY

VOLUME 47 NUMBER 11

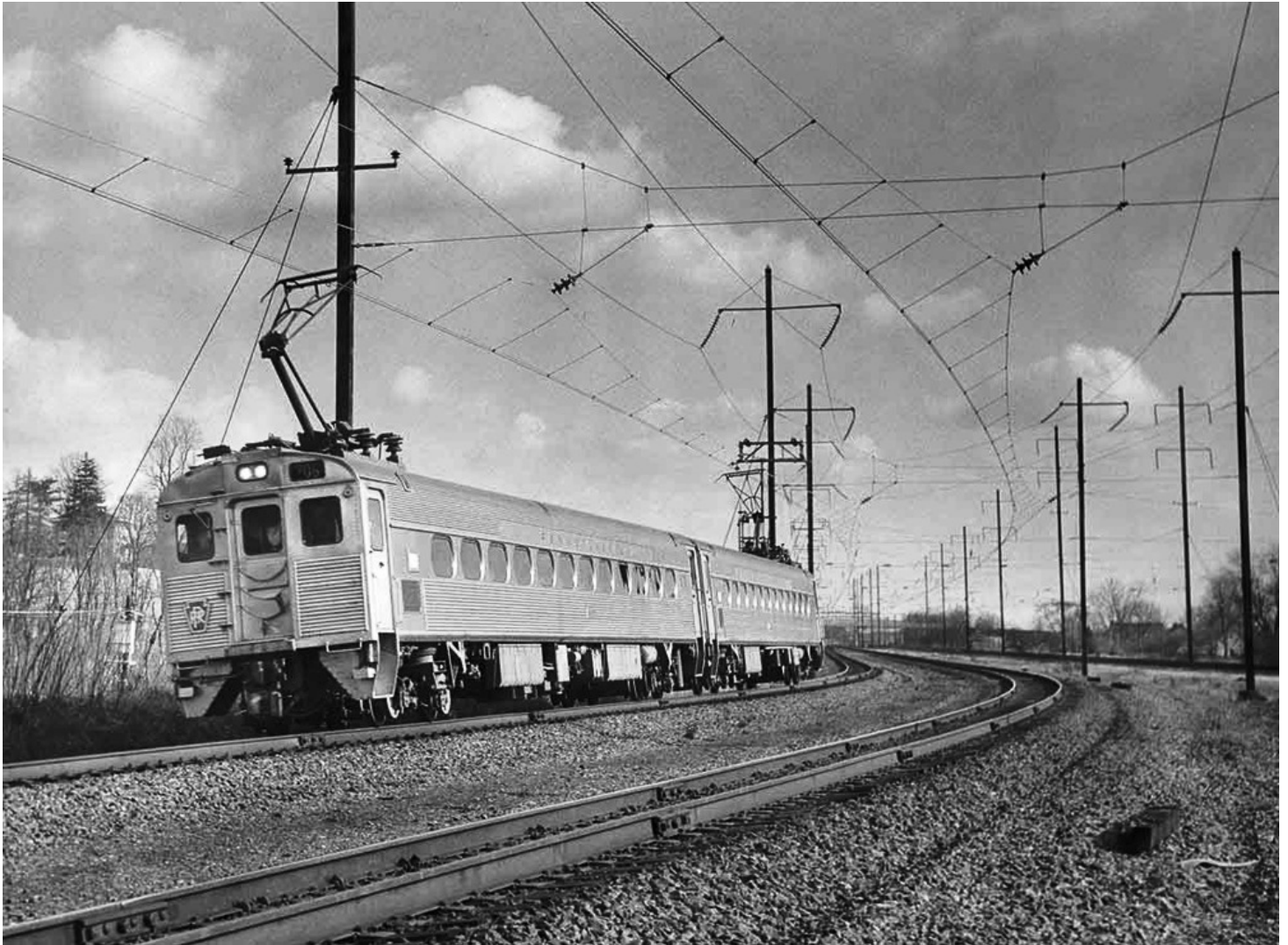
DISTRICT 2 - CHAPTER WEBSITE: [WWW.NRHS1.ORG](http://WWW.NRHS1.ORG)

NOVEMBER 2016



Happy Thanksgiving from the Lancaster Chapter, Inc., N.R.H.S.

# 51 YEARS AGO THIS MONTH



**TWO BUDD-BUILT "SILVERLINER II" MU'S FLOAT THROUGH ATGLEN, PA., ON A NOVEMBER 29, 1965 PRESS TRIP TO PREVIEW THE CARS' NEW ASSIGNMENT ON PHILADELPHIA-HARRISBURG TRAINS - DAVID G. KNOX PHOTO**



**HARRISBURG**  
**LANCASTER**  
**COATESVILLE**  
**DOWNINGTOWN**  
**PHILADELPHIA**

**Pennsylvania Railroad**

**TIME TABLE**  
LOCAL TIME **SEPTA**  
 Effective October 29, 1967

Lancaster-York Connections

**SEPTA**  
**FOR IMPROVED REGIONAL TRANSPORTATION**  
 If you live or work in Southeastern Pennsylvania, you already have benefited from the new and improved public transportation service inaugurated by SEPTA. These improvements have included more frequent, faster commuter trains and coordinated bus-train service.

The SEPTA program is planned for you. Your response allows SEPTA, in conjunction with the PRR, to schedule future improvements of service and facilities.

**SEPTA**  
 SOUTHEASTERN PENNSYLVANIA  
 TRANSPORTATION AUTHORITY



Form 41







## THE POWER DIRECTOR

“NEWS FROM THE RAILROAD WIRES”



### AMTRAK AGAIN OPERATES THE AUTUMN EXPRESS

**WILMINGTON - Amtrak Media Center** - Back by popular demand, the Amtrak Autumn Express operated this year on Oct. 29 and 30 through parts of New York, New Jersey and northeastern Pennsylvania. Once again, the train operated through small towns, historic tunnels and past key landmarks including parts of Pennsylvania's Lehigh Valley not traversed by passenger trains since the 1960's.

This year's Autumn Express departed New York Penn Station, passing under the Hudson River and stopping in Newark, N.J. to accept passengers and transition from electric to diesel power. From Newark, the train headed west along the former Lehigh Valley Railroad, through the famous Musconetcong Tunnel, opened in 1875, and across the Delaware River en route to Allentown.

Following the former route of the Queen of the Valley passenger train, which hasn't seen regularly scheduled passenger service in decades, the train changed direction in Harrisburg and returned to Philadelphia along the route of the Pennsylvania Railroad's Blue Ribbon Fleet. The train then rejoined the Northeast Corridor at Zoo Tower for a high speed run back to Newark and New York.

Seating was limited. Tickets were priced at \$149 for adults. Children aged 2-12 rode for half price with each adult ticket. Customers also received a boxed lunch, souvenir tote and complimentary lapel pin with the purchase of their ticket.

### HARRISBURG'S STATE TOWER CLOSES

Amtrak SUPPLEMENTAL BULLETIN ORDER No. NYW6-34-a (PH Line), Effective 12:01 A.M. Saturday, October 15, 2016, as part of State Interlocking Rehabilitation Project, *State* is no longer designated as an Interlocking Station and is an interlocking controlled by the Section B and C Train Dispatcher as designated in Part D. of this Bulletin Order.

*State Tower* isn't really a tower. *State* is the once massive interlocking at the east end of the Harrisburg Station complex. The so-called *State Tower* is on the first floor of the depot, and the Operator/Leverman can't even see any trains without walking out of the door. The interlocking machine is a US&S Model 14 installed at the time of the Electrification Project in 1937. The interlocking today handles about 30 passenger trains a day operating between Harrisburg and Philadelphia, and one through New York-Pittsburgh train.

This was the last open "Interlocking Station, Block Station and Train Order Office" (as the PRR would have called it) between Philadelphia and Harrisburg. (Amtrak and Abram Burnett)

### \$1.6 BILLION NEW TRAIN STATION FOR NEW YORK

**NEW YORK - Sept. 28, 2016 - Railway Age and Progressive Railroad** - In January 2016, Empire State Development, the New York MTA, Long Island Rail Road and Amtrak issued an RFP soliciting proposals for the comprehensive redevelopment of the historic midtown Farley Building, including a Train Hall and the surrounding office and retail space. The winners have now been announced.

Related Cos., Vornado Realty LP, and Skanska AB (RVS) have all provided guarantees to complete the \$1.595 billion project on time and, as part of the agreement, will pay the state a total of approximately \$600 million in recognition to the value of the development opportunity within the Farley

Building. The remainder of the project will be supported by \$570 million from Empire State Development and \$425 million from a combination of Amtrak, LIRR, Port Authority and federal government sources.



The Moynihan Train Hall will include shops and restaurants located under a new skylight on the building's historic and architecturally dramatic steel

trusses. The building will increase floor space 50% from Penn Station, and service riders on the LIRR, Amtrak and eventually accommodate passengers from Metro-North. A total of nine platforms and 17 tracks will be accessible from the Train Hall.

The project will use union labor and has committed to fully meet Governor Cuomo's goal of 30% of the work completed by Minority and Women-Owned Business Enterprises.

In addition to the train hall, the joint venture will develop 112,000 square feet of retail and nearly 588,000 square feet of office space within the Farley building, which is across the street from Penn Station. Preconstruction work will begin this fall; the new train hall is expected to be completed by December 2020.



The Governor also announced that the MTA will at the same time initiate the comprehensive redesign of the LIRR's existing 33rd Street concourse at Penn Station and an extensive renovation to the adjacent Seventh

and Eighth Avenue subway stations. Construction on the LIRR concourse and the subway stations will conclude by or before completion of the work on the Farley Train Hall. The redesign will include nearly tripling the width of the existing corridor, which will significantly decrease congestion and result in notably higher ceilings – providing bright lighting, new way-finding, ticketing and informational systems.

"The new train hall we are building will be magnificent and world class," Cuomo said. "New York will not have seen anything like it in decades. It will be 10 stories high and 50 percent larger than the existing Penn Station. It will become a destination."

For the remainder of Penn Station that Amtrak currently occupies, Amtrak will work with Empire State Development (ESD) to redevelop that space. The request for proposals for preliminary design of the Penn Station improvements were sent to pre-qualified consulting firms yesterday, Cuomo said.

All work on the complex will be coordinated with Amtrak's plans for the Gateway project, which involves building new Hudson River rail tunnels that will link the station, Manhattan and New Jersey.

"New York's tomorrow depends on what we do today, and the new

Moynihan Train Hall will be a world-class 21st century transportation hub," said Governor Cuomo. "With more than twice the passengers of all JFK, LaGuardia, and Newark airports combined, the current Penn Station is overcrowded, decrepit, and claustrophobic. The Moynihan Train Hall will have more space than Grand Central's main concourse, housing both Amtrak and LIRR ticketing and waiting areas, along with state-of-the-art security features, a modern, digital passenger experience, and a host of dining and retail options. This is not a plan – this is what's going to happen. People are going to walk through this station and recognize that this is New York."

#### AMTRAK LAUNCHES NATIONAL ON-BOARD MAGAZINE

WASHINGTON - Oct. 3, 2016, **Amtrak Media Center** - Amtrak unveiled its first national on-board magazine, *The National*, to enhance the experience for the 30 million customers who travel annually on Amtrak. The free magazine is available in seatbacks throughout the Amtrak network, which connects customers to more than 500 destinations and 46 states across the country. In addition to the availability of the magazine in seatbacks, a new digital site is available to customers across digital, mobile, social and onboard platforms.

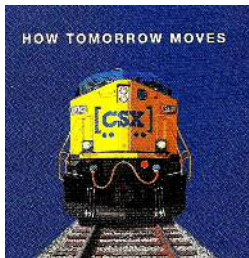


The National is committed to offering original, inspirational and informative writing from respected local and international contributors. In the first issue, customers will find a wide array of features including travel essays, fiction, poetry, and fine-art photography to include lost early fiction from Jack Kerouac, an overview of the National Museum of African American History and Culture in Washington, D.C.; and a portrait of shrimpers on the Gulf Coast. A series of recurring editorial themes will include:

- > Rail Life – Vignettes featuring people, places and experiences across the country
- > Made in America – Profiles of American companies
- > The National Conversation – Pop culture Q&A
- > Next Stop – In-depth feature on an effort to preserve or highlight an important piece of American culture or history
- > Photography Highlight – fine art photographer documenting unique elements of Amtrak train travel
- > Train of Thought – A personal essay related to train travel

"The National is an inspired publication that celebrates American culture," said Jordan Heller, The National Editor in Chief. "Railways are integral to shaping our national identity and America's Railroad® is the perfect platform for a contemporary magazine."

The National will be produced by Ink and produced out of the publisher's New York office.



#### CSX CORPORATION ANNOUNCES THIRD QUARTER EARNINGS

##### Highlights:

- With macroeconomic and energy headwinds impacting most markets, CSX once again delivered solid financial results in the third quarter
- Earnings per share were \$0.48 and operating ratio was 69.0 percent, reflecting continued

strong cost performance

JACKSONVILLE, Fla. – October 12, 2016 – **CSX Corporation** today announced third quarter 2016 net earnings of \$455 million, or \$0.48 per

share, down from \$507 million, or \$0.52 per share, in the same period of last year.

"CSX continues to drive strong cost performance and efficiency in this dynamic market environment while meeting or exceeding customer expectations," said Michael J. Ward, chairman and chief executive officer. "Our financial results demonstrate CSX's ability to deliver value for shareholders and customers in the current business climate as we position the company to maximize opportunities in 2017 and beyond."

Revenue for the quarter declined 8 percent, consistent with volume declines of 8 percent overall, including coal volume declines of 21 percent. At the same time, expenses improved 7 percent in the quarter, primarily driven by \$112 million of efficiency gains and \$53 million of volume-related cost reductions.

As these cost savings partially offset the impact of lower volume and changing business mix, operating income declined 10 percent to \$841 million and the operating ratio increased 70 basis points year-over-year to 69.0 percent.

While the U.S. dollar strength and low global commodity prices persisted in the quarter, CSX is positioning itself to maximize shareholder value by leveraging network improvements, technology enhancements and superior service to capture growth opportunities and achieve a mid-60s operating ratio longer term.



#### NORFOLK SOUTHERN HIGHLIGHTS INVESTMENT, IMPROVED CUSTOMER SERVICE ON FIRST ANNIVERSARY OF DELAWARE & HUDSON LINE PURCHASE

Norfolk, Va. - Sep 19, 2016 - Norfolk Southern Corporation today marked the first anniversary of its purchase of Delaware & Hudson Railway Co.'s (D&H) line between Sunbury, Pa., and Schenectady, N.Y., by highlighting improved customer service and infrastructure investments NS has made to the corridor.

"We set out to improve our competitive transportation offerings between Pennsylvania, New York, and New England, and I'm proud to say Norfolk Southern is well on its way to achieving that goal," said NS Chairman, President, and CEO James A. Squires. "Norfolk Southern takes great pride in incorporating this corridor into our safe, reliable, and efficient 22-state freight rail network."

On Sept. 18, 2015, NS completed its purchase of 282 miles of D&H track for \$214.5 million from Canadian Pacific Railway. Delaware & Hudson is a subsidiary of CP.

During the past year, NS has improved safety and service on the line by installing 90,000 new ties, resurfacing 84 miles of track, and making improvements to the Belden Tunnel in New York. Additionally, NS hired 166 new employees, including 140 former D&H employees with experience working the corridor.

Improved service on the route, including an average of eight daily trains, has helped attract additional rail traffic, shifting long-haul trucks off public roadways. NS Intermodal terminals at Ayer, Mass., and Scranton, Pa., have seen double-digit volume growth during the past year.

The line connects to Norfolk Southern's network at Sunbury and Binghamton, N.Y., as well as to its joint venture subsidiary Pan Am Southern at Mechanicville, N.Y. Together, the Pan Am Southern network, which services New England markets, and the former D&H line provide NS with a single-line route linking Chicago and southeastern U. S. markets to the Capital Region of New York.

Norfolk Southern's partnership with New York to replace the Portageville Bridge in Letchworth State Park will further improve service to Binghamton, Scranton, Albany, and New England. The new bridge, expected to open in 2017, will replace the span, which operates under weight and speed restrictions.



"Our operation of this corridor not only underscores our confidence in the economy of the region, but also preserves good-paying railroad jobs and revitalizes this important rail line," said John H. Friedmann, NS vice president strategic planning. "We're making these investments to provide our customers with freight rail service that helps them thrive, and we continuously look to improve safety for our employees, our customers, and the communities in which we operate."



### **NJT TRAIN CRASHES AT HOBOKEN TERMINAL**

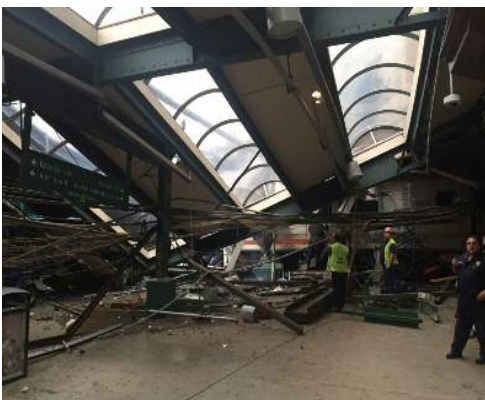
By William C. Vantuono - *Railway Age*

*One person died and 108 were injured, some of them critically, when an NJ Transit train crashed through an end-of-platform bumping block and into the train concourse in Hoboken Terminal just before 9:00 AM on Thursday, Sept. 29.*

"At approximately 8:45 AM, train no. 1614, a Pascack Valley line departure from Spring Valley operating to Hoboken, struck the Hoboken Terminal building on Track 5," NJ Transit said in a statement.



**NJ TRANSIT WRECKAGE IN THE HOBOKEN TERMINAL SHOWN IN AN IMAGE FROM THE NATIONAL TRANSPORTATION SAFETY BOARD**



**NJT COMET V CAB CAR NO. 6036 IN THE TRAIN CONCOURSE AT HOBOKEN TERMINAL - PANCHE BERNASCONI/GETTY IMAGES**

Train No. 1614, with a Comet V cab car on the head end, departed from Spring Valley at 7:23 AM and was due to arrive in Hoboken at 8:38 AM. The cab car came to a halt between the terminal's indoor waiting area and the end of the platform. A metal and glass train shed collapsed. Most of the injuries occurred in the lead car or to people struck by collapsing debris inside the station. Many people were trapped on the train or in the debris. The single fatality was a woman in her 30s who was on the platform.

neither the Federal Railroad Administration or the National Transportation Safety Board had communicated any preliminary findings. One eyewitness described the train's 48-year-old engineer, Thomas Gallagher, a 27-year veteran, as "slumped over the controls," indicating that he may have become disabled as the train approached the platform. Gallagher was treated at a local hospital and released. He is said to be cooperating with authorities on the investigation.

There has been speculation as to whether Positive Train Control (PTC) would have prevented the wreck. It "might" have, according to *Railway Age* contributor David Schanoes, a retired operating officer who now consults. NJT is in the process of installing PTC system-wide, but does not currently have plans to install it within Hoboken Terminal's massive and complex interlocking plant. NJT applied for and received from the FRA what is known as a "Main Line Track Exclusion Addendum" (MTEA) to its PTC

Implementation Plan (PTCIP) for Hoboken Terminal, where the existing ATC (Automatic Train Control, cab signal with speed control) system enforces an MAS (maximum authorized speed) of 20 mph. PTC would have provided a zero-speed target for the end of the platform, and would have automatically made a penalty brake application if it calculated and determined that the train's 20 mph-to-0 mph braking curve was insufficient to stop the train just short of the end-of-platform bumping block. ATC does not calculate and enforce braking curves.

NJT's form of PTC is ASES (Advanced Speed Enforcement System) II, a transponder-based technology similar to and fully compatible and interoperable with Amtrak's ACSES (Advanced Civil Speed Enforcement System) employed on the Northeast Corridor. ASES, according to Schanoes, would not necessarily need to be deployed throughout Hoboken Terminal's entire interlocking plant. It could be deployed for the platform tracks only, with transponders installed in positions where they would enforce the 20 mph-to-0 mph distance for the heaviest train.

The fact that approximately half the length the 85-foot Comet V cab car breached the platform before coming to a stop indicates it was traveling no faster than 20 mph. Any faster, and the train would have traveled much further into the station. It is not known at this time if the emergency brake was applied by anyone on board 1614, passengers or train crew, or if there was any equipment failure. Only the cab car's event recorder data will shed light on what exactly caused the wreck.

### **NTSB: NJ TRANSIT TRAIN'S BRAKES, SIGNAL AND TRAIN CONTROL SYSTEM 'FUNCTIONED AS DESIGNED' DURING HOBOKEN CRASH**

Oct. 14, 2016, *Progressive Railroading* - The brakes on the New Jersey Transit train that crashed into the Hoboken Terminal late last month were working properly, according to the National Transportation Safety Board's (NTSB) preliminary report on the fatal incident.

The train's brakes "functioned as designed" during a friction brake test using the rear locomotive to apply the brakes, NTSB officials said in the report, which was released yesterday.

One person died and 110 more were injured when the train failed to stop, overrode a bumping post and struck a wall of the terminal. The train was traveling more than twice the speed limit before it smashed into the station.



**AERIAL VIEW OF THE DAMAGE TO THE NJ TRANSIT TRAIN. PHOTO - NTSB**

Although the cab car's electrical communication network needed for brake and propulsion control was destroyed in the accident, the friction brake test demonstrated that the brakes were in working order. Follow-up testing of several other key controlling components has been scheduled, NTSB officials said.

Investigators also found that NJ Transit's signal and train control system functioned as designed when the accident route was duplicated with signal alignment.

An NTSB drone was deployed to capture 109 aerial images of the accident scene, including the terminal's collapsed roof.

The NTSB's preliminary report provides factual information on the investigation; it doesn't contain analysis or state a probable cause. Additionally, the information in the report is subject to change as data is validated, NTSB officials said.

### **HOBOKEN TERMINAL BACK AT FULL SERVICE**

HOBOKEN - Oct. 17, 2016, *Railway Track & Structures* - New Jersey Transit (NJ Transit) opened additional tracks at Hoboken Terminal Oct. 17, enabling the full restoration of train service into the hub.

Customers may access Tracks 1, 2, 3 and 4 through the external walkway

near PATH and Tracks 7 and 8 via the Main Terminal. NJ Transit said customers should note that there also would be some reconfiguration of paths of travel to account for the change in access points.

Tracks 5 and 6 remain out of service following an accident Sept. 29 where one woman died and 110 people were injured when a NJ Transit train entered the terminal at 21 mph causing an accident. The National Transportation Safety Board released its preliminary report on the accident on Oct. 14.

Tracks 5 and 6 will remain closed as NJ Transit advances ongoing repair and recovery work.

"We are pleased to be able to expedite additional service into Hoboken for our customers. In addition, and as an extra safety measure, trains entering Hoboken Terminal will decrease their approach speed from 10 mph to 5 mph to complement the new safety measure of having the conductor ride in the cab car with the engineer remains," said NJ Transit Executive Director Steven Santoro. "The combination of additional track space, as well as the added safety measure will demonstrate that we are working swiftly and purposefully toward providing our customers with an optimal commute," he said.



### SEPTA REGIONAL RAIL SERVICE BACK ON NORMAL SCHEDULES

PHILADELPHIA - Oct. 6, 2016, *Trains* News Wire (Edited) - On October 3, Commuter trains started returning to their normal schedules on the Southeastern Pennsylvania Transportation Authority's regional routes (although with delays - Ed.) The schedules had been modified for much of the summer and early fall due to the unexpected need for SEPTA to sideline its entire Silverliner V fleet for inspection and repairs.

The agency's fleet of 120 Silverliner Vs, or about one-third of the entire regional rail fleet, was taken out of service in early July following the discovery of cracks in the equalizer beams of most of the vehicles.

Repairs are ongoing and the railcars are gradually reentering service as they are fixed. The agency says that more than 50 repaired Silverliner Vs are now in service. The combination of repaired vehicles, other agency-owned equipment and leased vehicles from Amtrak, NJ Transit, and Maryland's MARC, is allowing the agency to resume its regular weekday schedules.

## THIS MONTH ON THE PENNSY

### PRR, PRSL & LIRR EVENTS IN NOVEMBER

**Nov. 25, 1906** - Columbia & Port Deposit Branch closed between McCall Ferry and Pequea to permit construction of the McCall Ferry hydroelectric dam.

**Nov. 27, 1911** - PRR announces that in first year, Penn Station has handled about 10 million passengers; station work force is 750; Bureau of Information handled 377,714 telephone inquiries.

**Nov. 22, 1916** - PRR Board approves enlarging Hotel Pennsylvania from 1,000 to 2,000 rooms by adding two 20-story wings at additional cost of \$3.5 million.

**Nov. 7, 1921** - PRR announces it has contracted with the Sun Ship Building Company for two steel ferry boats for Camden service.

**Nov. 28, 1926** - Heavy Thanksgiving weekend travel to Atlantic City; *New York Limited* leaves in five sections with total of 49 Pullmans; regular New York train operates in two sections and one extra train run.

**Nov. 16, 1931** - PRR signs an agreement with The Savarins, Inc., to operate the restaurant at the new 30th Street Station in Philadelphia.

**Nov. 28, 1936** - Army-Navy Game held for the first time in Philadelphia's Municipal (later JFK) Stadium; PRR runs 38 special trains in what becomes

an annual event; Greenwich Yard freight tracks adjacent to stadium serve as temporary terminal; Navy beats Army 7-0.

**Nov. 3, 1941** - Duke and Duchess of Windsor leave Penn Station in a private Pullman attached to regular trains, en route to Miami and the Bahamas.

**Nov. 21, 1946** - PRR changes EMD diesel order from 10 A-B-B-A passenger F-3's to 10 A-B-A E-7's because of reports of poor riding quality of FT units used on Santa Fe; reduced to 8 E7's on Dec. 12.

**Nov. 8, 1951** - PRR announces \$9 million rebuilding of Morrisville Yard, inactive since 1946, in connection with new Fairless Works of U.S. Steel Corp.; to be completed in 1953.

**Nov. 21, 1956** - ICC approves PRR request to remove cab signals between Parkton and Glencoe on Northern Central.

**Nov. 8, 1961** - James M. Symes and Alfred E. Perlman announce that PRR and NYC are reopening merger negotiations and will move forward as rapidly as possible; NYC has lost \$24.8 million in the first nine months of 1961, and the PRR has lost \$12.8 million.

**Nov. 15, 1966** - U.S. Dept. of Commerce begins "Operation High Step" with the test cars T-1 to T-4 running at night over the whole test track between "COUNTY" and "MILLHAM"; speeds on the first day reach 120 MPH; as speeds top 100 MPH, problems occur with pantograph contact and suspension systems, which cause the cars to bounce noticeably independent of each other; the flat car fronts and underbody equipment create severe turbulence.

CHRISTOPHER T. BAER, HAGLEY MUSEUM AND LIBRARY VIA PHILADELPHIA CHAPTER, PRRT&HS - USED WITH PERMISSION



## TIMETABLE 11-16

FOR LANCASTER CHAPTER  
News,  
SEE "INSIDE THE BACK  
PAGE"

\*\*\*

### SANTA AND CHRISTMAS TRAINS

Allentown & Auburn - 570-778-7531 - [www.allnrr.com](http://www.allnrr.com)

Cape May Seashore Lines - [www.capemayseashorelines.org](http://www.capemayseashorelines.org)

Colebrookdale Railroad - 866-289-4021 - [www.colebrookdalerrailroad.com](http://www.colebrookdalerrailroad.com)

Lehigh Gorge Scenic Railway - 610-562-2102 - [www.lgsry.com](http://www.lgsry.com)

Middletown & Hummelstown Railroad - 717-944-4435 - [www.mhrrailroad.com](http://www.mhrrailroad.com)

New Hope & Ivyland Railroad - 215-862-2332 - [www.newhoperailroad.com](http://www.newhoperailroad.com)

Railway Restoration Project 113 - 570-544-8300 - [www.rrproject113.org](http://www.rrproject113.org)

Steam Into History - 717-942-2370 - [www.steamintohistory.com](http://www.steamintohistory.com)

Steamtown National Historic Site - 570-340-5204 - [www.nps.gov/stea](http://www.nps.gov/stea)

Stewartstown - 717-746-8123 - [www.stewartstownrailroadcompany.com](http://www.stewartstownrailroadcompany.com)

Strasburg Rail Road - 1-866-725-9666 - [www.strasburgrailroad.com](http://www.strasburgrailroad.com)

West Chester Railroad - 610-430-2233 - [www.westchesterrr.com](http://www.westchesterrr.com)

Wilmington & Western Railroad - 302-998-1930 - [www.wwrr.com](http://www.wwrr.com)

\*\*\*

**Saturday & Sunday, Nov. 5-6, 2016**

*Greenberg's Great Train & Toy Show* at the Harrisburg Mall, 3501 Paxton Street, Harrisburg, Pa 17111. Info: [www.trainshow.com](http://www.trainshow.com)

**Sunday, Nov. 6, 2016**

*39<sup>th</sup> Annual Gaithersburg Railroad and Transportation Artifacts Show and Sale* at the Montgomery County Fairgrounds, Gaithersburg, Md. Info: email - [rrshows@aol.com](mailto:rrshows@aol.com); web - [www.gserr.com](http://www.gserr.com)

**Saturday & Sunday, Nov. 12-13, 2016**

*First Frost Train Meet* at the Allentown Fairgrounds Agri Plex, 302 N 17th



St., Allentown, Pa 18104. Info: [www.allentowntrainmeet.com](http://www.allentowntrainmeet.com)

Sunday, Nov. 20, 2016

TCA Atlantic Division Toy Train Show at the Plumbers Union Hall, 2791 Southampton Rd., Philadelphia, Pa 19154. Info: [www.adtca.com](http://www.adtca.com)

Saturday & Sunday, Nov. 26-27, Dec. 3-4, 10-11, 17-18, 23-24, 2016

Columbia Historic Preservation Society HO Model Railroad Open House at 21 North 2nd Street, Columbia, PA 17512. Info: <http://tonysegro.com/cola.html>

Saturday & Sunday, Nov. 26-27, 2016

Open House at the Schuylkill Valley Model Railroad Club, 400 South Main Street, Phoenixville, Pa. 19460. Info: 610-935-1126.

Saturday & Sunday, Nov. 26-27, 2016

Greenberg's Train and Toy Show at the New Jersey Expo Center, 97 Sunfield Rd., Edison, NJ 08837. Info: <http://trainshow.com/edison11>

Sunday, Nov. 27, Dec. 4, 11, 18, 2016

Thursday, Friday, Saturday, Dec. 29-31, 2016 - 7:00-9:00 PM

14<sup>th</sup> Annual Red Lion Train Station Model Railroad Holiday Open House at 73 N. Main St. - PA Rt. 24, one block north of center square, Red Lion, Pa. 17356. 1:00-5:00 PM. FREE, donations appreciated.

Saturday & Sunday, Dec. 3-4, 2016

Open House at the Schuylkill Valley Model Railroad Club, 400 South Main Street, Phoenixville, Pa. 19460. Info: 610-935-1126.

Saturday & Sunday, Dec. 3-4, 2016

Ocean City Train Show at the Ocean City (NJ) Sports & Civic Center, 6th & Boardwalk. 10am - 5pm Saturday and 10am - 4pm Sunday. Admission is \$3 for adults and \$1 for children. For more information call 609-399-6111.

Saturday & Sunday, Dec. 3-4, 2016

Greenberg's Train and Toy Show at the Maryland State Fairgrounds, 2200 York Rd., Timonium, Md 21093. Info: <http://trainshow.com/timonium12/>

Tuesday-Saturday, June 20-24, 2017

2017 N.R.H.S. Convention in Nashville, Tenn.



**ROUTE 741 EAST, STRASBURG, PA**

[WWW.RRMUSEUMPA.ORG](http://WWW.RRMUSEUMPA.ORG)

**717-687-8628**

**Thru Saturday, Dec. 31, 2016 - Safety First! The Evolution of Railroad Safety Practices**

**Saturday, Nov. 5, 2016 - 1940s Swing Dance**

**Saturday & Sunday, Nov. 5-6, 2016 - Trains & Troops**

**Saturday, Dec. 3 & 10, 2016 - Christmas With The Conductor**

**Saturday, Dec. 3 & 10, 2016 - Home For The Holidays**



**STRASBURG RAIL ROAD**

**SPECIAL EVENTS**

[WWW.STRASBURGRAILROAD.COM](http://WWW.STRASBURGRAILROAD.COM)

**1-866-725-9666**

**Friday-Sunday, Nov. 18-20, 2016 - Day Out With Thomas**

**Friday, Nov. 25, 2016 - Santa's Paradise Express & The Night Before Christmas Train**

**Sat & Sun, Nov. 26-27, Dec. 3-4, 10-11 17-18, 2016 - Santa's Paradise Express**

**Thurs. & Fri., Dec. 1-2. 8-9, 15-16, 2016 - The Night Before Christmas Train**

**Saturday, Dec. 3, 2016 - Christmas Tree Train**



**OCTOBER, 2016**

## **CHAPTER MEETING MINUTES**

The Regular Membership Meeting of the Lancaster Chapter, National Railway Historical Society was held at the Christiana Freight Station, Christiana, Pa. on Monday, October 17, 2016. The meeting was called to order at 7:35 p.m. by President Tom Shenk with 38 members and 6 guests present. President Tom Shenk led those assembled in the Pledge of Allegiance.

**MINUTES:** President Tom Shenk asked for a motion to approve the September Membership Meeting Minutes. Steve Himpsl approved the motion and David Stambaugh seconded the motion. The September membership minutes were approved as printed in the Lancaster Dispatcher.

**CHAPLAIN:** Chaplain David Stambaugh, reported chapter member Barry Schmitt's wife Sue was in the hospital. They missed the chapter's Fall Foliage Trip due to her hospital stay. Nelson Strubel reported his brother Jay is still at the Rehabilitation Center after two months. Nelson is also awaiting news from some test results to see if he has Parkinson's disease.

**MEMBERSHIP:** President Tom Shenk introduced guests Danelle and Daniel Moyer from Nichol Mine area, David Newall from Lutheran Acres, Everett Priestly from West Grove, and Jack Lewis from Strasburg. Tom also introduced new chapter member Drew Schlecker from Cochranville.

**TREASURER'S REPORT:** Treasurer Richard Rutledge gave the Treasurer's Report for the month of September.

**CHAPTER BUDGET:** President Tom Shenk reviewed the 2016-2017 Chapter Budget with the chapter membership. There were additional costs of \$8334.28 for all the outside brick work done on the Christiana Freight Station that was not in the approved budget for 2016-2017. Tom McMaster made a motion to amend the chapter budget for 2015-2016 to include the additional costs. Evan Russell seconded the motion. Fred Kurtz made the motion to approve the 2016-2017 proposed chapter budget. David Stambaugh seconded the motion. The chapter membership approved the amended budget for 2015-2016 and the new budget for 2016-2017.

**NATIONAL NEWS:** National Representative Fred Kurtz reported dues notices were sent out in an email from National. Chapter members can pay their National dues on the computer through the "AMILIA" program. You also will receive a letter in the mail from National about your dues. Please do not pay again if you renewed your dues on the computer. Fred will be sending out Chapter dues letters in the next couple of weeks. Fred announced Smoke and Helen Shaak are traveling by train and rode the "Empire Builder" to Portland, from Portland to Sacramento, San Francisco area on the "Starlight." They spent a couple of days on the "Queen Mary" in Los Angeles, then on to New Orleans on the "Sunset Limited" and then riding the "Crescent" back home. Fred announced if anyone knows of any young people (Freshman year to Senior year) that would be interested in Rail Camp, submit their names. Fred reported Rail Camp is National's most successful program. There is one program on the East Coast in June and another on the West Coast the end of July. Scholarships might be available to help with costs of attending. Fred also talked about "National's Bylaws." The National Bylaws state every chapter member should be a member of both Chapter and National. At this point we are not enforcing this bylaw.

**NOMINATING COMMITTEE:** The 2016 Nominating Committee is: Evan Russell, Lorrie Steffy and Kevin Crouse. President Tom Shenk announced the following offices and officers for the 2015-2016 year: President-Tom Shenk; First Vice President-Harold Shaak; Second Vice President-Glenn Kendig; Secretary-Donetta Eberly; Treasurer-Richard Rutledge; Editor-Ed Mayover; Historian-Tom McMaster; Chaplain-David Stambaugh; 1st Director at Large-Cindy Kendig; 2nd Director at Large-Steve Himpsl; National Representative-Fred Kurtz. The election was open to the floor. Peggy Sweigart would like to be a candidate to run for the position of National Representative against Fred Kurtz. The ballots were handed out to the Chapter membership by 2nd Director-at-Large Steve Himpsl. The votes were counted by President Tom Shenk and checked by the Chapter Secretary. Fred Kurtz will be the National Representative for the next year.

President Tom Shenk announced the new officers for the 2016-2017 year: President-Tom Shenk; First Vice President-Harold Shaak; Second Vice President-Glenn Kendig; Secretary-Donetta Eberly; Treasurer-Richard Rutledge; Editor-Ed Mayover; Historian-Tom McMaster; Chaplain-David Stambaugh; 1st Director at Large-Cindy Kendig; 2nd Director at Large-Steve Himpst; National Representative-Fred Kurtz. Barry Schmitt made the motion to accept the offices and officers as they stand. Mary Kerschner seconded the motion. The Chapter Secretary cast the ballot and the offices and officers stand as announced.

**ANNOUNCEMENTS:** Tom Shenk announced the next Board Meeting will be held on Monday, November 14, at the Travel Time office at 7:30 p.m. Steve Himpst showed a picture of the Lancaster City Historical plaque that will be installed at the South End of Lemon Street of the Janice C. Stork Corridor Park. There will be three plaques put in the park and the Lancaster Chapter paid for one of the plaques. Steve announced the Chapter's new updated Rosters can be picked up at tonight's Chapter Meeting. New donated books and DVD's are also available to take out of the Chapter Library. A sign up sheet was passed around at the Chapter Meeting for donations and volunteers needed for the Vendor and Craft Show on Saturday, October 22 from 9 a.m. to 2 p.m. Tom announced if anyone has time to come down to the Freight Station and do some painting of the Station doors. Contact Glenn Kendig. Tom reported on the Fall Foliage day trip on Saturday, October 15, 2016. We rode the Allentown and Auburn Railroad, the Colebrookdale Railroad, toured the Boyertown Historical Vehicle Museum and had a catered lunch at Janelle Hall Restaurant (east of Kutztown). It was a very beautiful day and great trip. Glenn thanked Tom for putting the trip together for the chapter. Steve Himpst celebrated his 65th birthday today.

**UPCOMING EVENTS AND DATES:** Tom announced the Annual Chapter Banquet will be held at the Revere Tavern on Friday, November 18. Decorating the Christiana Freight Station for the Christmas Holidays will be Thursday, December 1 at 7:00 p.m. The Christiana Freight Station Christmas Open House will be Saturday, December 17 and Sunday, December 18. Saturday's activities include Santa and hayrides provided by the Lions Club starting at 3:00 p.m. Monday, December 19 will still be the Regular Chapter Membership Meeting. This meeting is the Annual Christmas party. Bring your favorite cookies or desserts to share. Monday, January 16, 2017 will be Christiana Freight Station clean up (take down the Christmas decorations at the Station). Monday, February 20 there will be NO Chapter Meeting. The March Chapter Meeting will be Sunday, March 19, 2017.

**ADJOURNMENT:** The Chapter Meeting was adjourned at 8:15 p.m. for the program given by Paul Kutta entitled "Gone Forever-American Fallen Flag Railroads Large and Small."

*Respectfully submitted by Donetta M. Eberly Secretary*



**LESS THAN CARLOAD SHIPMENTS  
LOCAL AND NATIONAL NEWS**



**STATE AWARDS \$25.2M FOR PHILLY-AREA  
PROJECTS, INCLUDING VIADUCT RAIL  
PARK**

By Jacob Adelman, Staff Writer, [philly.com](http://philly.com) (Edited) - Sept. 30, 2016

State officials have awarded \$25.2 million in grants from the Redevelopment Assistance Capital Program (RACP) for Philadelphia-area redevelopment projects, including \$3.5 million for the Viaduct Rail Park project planned along abandoned tracks north of Center City.

Paul Levy, who has been leading efforts surrounding the Viaduct Rail Park proposal as president of the Center City District business association, said the award would let work begin this fall on the project's first phase.

That initial quarter-mile stretch is budgeted at \$9.6 million, and work is expected to take 15 to 18 months. It involves laying gravel and boarded



**A RENDERING OF THE FUTURE VIADUCT RAIL PARK  
- STUDIO BRYAN HANES**

paths on a section of former railway stretching from near Broad and Noble Streets to a junction just past 12th and Callowhill Streets.

Later phases would extend the rail park northeast toward Northern Liberties and west through Fairmount, covering a total of three miles.

"This will take us from Photoshop to real construction," Levy said of the RACP grant. It "puts us very close to having everything we need."



**REPORT: FLORIDA EAST COAST FOR  
SALE**

October 14, 2016 - Florida East Coast Railway's owner is getting ready to put the regional up for sale, according to a Bloomberg News report.

Fortress Investment Group, which purchased the FEC for \$3.5 billion in June 2007, has hired investment banking firms Barclays and Morgan Stanley to advise on a potential sale, Bloomberg reported, citing unnamed sources said to be familiar with the matter.

Representatives from Fortress and FEC did not immediately respond to *Trains* News Wire's messages seeking comment on Thursday afternoon.

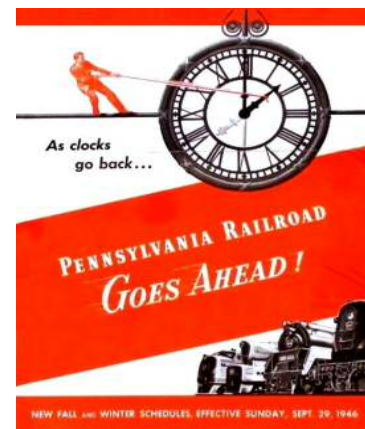
It is unclear what impact, if any, a potential sale would have on All Aboard Florida's Brightline passenger project. All Aboard Florida, another Fortress subsidiary, was created to develop a privately funded and operated passenger service that will use FEC tracks between Miami and Cocoa, Fla., and to Orlando via a proposed new route.

After purchasing Florida East Coast Industries in 2007, Fortress split the company into two: the railway and Flagler, one of the Sunshine State's largest commercial real estate developers.

The railway is valued at \$850 million, according to the Fortress website, while Flagler's value is pegged at \$3.1 billion.



**OPERATION LIFESAVER REMINDS YOU...  
Most grade crossing incidents occur when the weather  
is clear and dry.**



**DAYLIGHT SAVING TIME ENDS AT 2:00 AM  
ON SUNDAY, NOVEMBER 6, 2016. DON'T  
FORGET TO TURN YOUR CLOCKS BACK ONE  
HOUR.**



**"INSIDE THE BACK PAGE"****UPCOMING LANCASTER CHAPTER ACTIVITIES****NOVEMBER 14, 2016 - MONDAY, 7:30 PM - CHAPTER BOARD MEETING AT TRAVEL TIME OFFICE****NOVEMBER 18, 2016 - FRIDAY EVENING - HISTORIC REVERE TAVERN - ANNUAL CHAPTER BANQUET**Complete information and order form is in this issue of *The Lancaster Dispatcher*. All Aboard the Banquet Express!!!**DECEMBER 1, 2016 - THURSDAY, 7:00 PM - CHRISTIANA FREIGHT STATION - CHRISTMAS DECORATING**

Decorate the Freight Station and Christmas Tree for the Holiday Open House and Christmas. Bring your favorite Train Ornament to hang on the tree. This is a fun-filled activity to usher in the Holiday Season.

**DECEMBER 17, 2016 - SATURDAY, 3:00 PM - CHRISTIANA FREIGHT STA. - CHRISTIANA CHRISTMAS PARTY**

The Christiana Lions Club will have Santa for the area children and families. Everyone is invited. Saturday night Hay Rides to see the Christiana Borough Christmas light displays - a fun-filled evening for the entire family!

**DECEMBER 18, 2016 - SUNDAY, 1:00 PM - CHRISTIANA FREIGHT STATION - CHRISTMAS OPEN HOUSE**

Open House from 1:00 PM to 5:00 PM. Enjoy the Station decorated for Christmas, popcorn, train layout and holiday displays.

**DECEMBER 19, 2016 - MONDAY, 7:30 PM - CHRISTIANA FREIGHT STATION - CHAPTER CHRISTMAS PARTY**

Please bring cookies, snacks or a covered dish to share. There's no better way to get into the festive holiday spirit! No business meeting - just food, fun and holiday merriment! We have the Santa Claus Seal of Approval!

**CHAPLAIN CONTACT INFORMATION****DAVID STAMBAUGH    EMAIL: [CHAPLAIN@NRHS1.ORG](mailto:CHAPLAIN@NRHS1.ORG)    PHONE: 717-292-1726 OR CELL 717-683-3053**

If you know of a Chapter Member who is sick, lost a loved one or has a new birth in the family, please contact David



**IN THE SPIRIT OF THANKSGIVING, THE LANCASTER CHAPTER, N.R.H.S. BOARD OF DIRECTORS EXTENDS A SINCERE "THANK YOU" TO ALL CHAPTER MEMBERS AND FRIENDS WHO DEVOTE THEIR TIME AND EFFORT TO THE CHAPTER. EVERYTHING YOU DO IS SINCERELY APPRECIATED!**



## CHRISTMAS HOLIDAY OPEN HOUSE WEEKEND



**CHRISTIANA FREIGHT STATION, DECEMBER 17-18, 2016**

**LANCASTER CHAPTER, N.R.H.S. WILL HAVE A SALES TABLE FOR THE OPEN HOUSE WEEKEND**

### DAILY SCHEDULE

**SATURDAY, DECEMBER 17 - 3:00 PM TO 8:00 PM**

**Family Children's Party - 3:00 PM to 5:00 PM**

**Train Displays, Visit from Santa, Children's Activities, Free Hot Dogs and Drinks for Children**

**Hay Rides starting at 5:00 PM**

**Lancaster Chapter, NRHS Sales Table - Purchase Last Minute Gifts**

**Popcorn - Hot Dogs - Snacks - Drinks will be available**

*See Christiana Borough's Annual "Light Up Christmas" Christmas Lighting Contest*

*Hay Rides Around Town Sponsored by the Christiana Lions Club*

**SUNDAY, DECEMBER 18 - 1:00 PM TO 5:00 PM**

**Freight Station Decorated for Christmas - Train Displays**

**Popcorn - Snacks - Drinks will be available**

**Lancaster Chapter, NRHS Sales Table - Purchase Last Minute Gifts**

**THE ANNUAL LANCASTER CHAPTER, NRHS CHRISTMAS PARTY IS ON**

**MONDAY EVENING, DECEMBER 19, 2016 AT 7:30 PM**



MBTA No. 1130, a GP40MC at ROCKPORT, MASSACHUSETTS ON A FRIGID FEBRUARY 9, 2013







# LANCASTER CHAPTER, N.R.H.S. ANNUAL BANQUET

## FRIDAY EVENING, NOVEMBER 18, 2016

THE HISTORIC REVERE TAVERN - BANQUET CENTER

3063 LINCOLN HIGHWAY (U.S. ROUTE 30)

PARADISE, PENNSYLVANIA 17562-0336

(717) 687-8601



PLEASE JOIN US AS WE RETURN TO THE HISTORIC REVERE TAVERN FOR ANOTHER WONDERFUL EVENING WITH GREAT FOOD AND THE FRIENDSHIP OF YOUR FELLOW CHAPTER MEMBERS. AND DON'T FORGET THE FABULOUS DOOR PRIZES! MAKE THIS YOUR FIRST EVENT OF THE HOLIDAY SEASON!

SOCIAL HOUR / FAMILY-STYLE MEAL / DOOR PRIZES

6:00 PM - FELLOWSHIP SOCIAL HOUR

6:30 PM - IN-ROOM FAMILY-STYLE MEAL

FOLLOWED BY A PROGRAM PRESENTED BY NOTED RAIL PHOTOGRAPHER STEVE BARRY

**THE ANNUAL BANQUET COST FOR 2016 IS \$25.00 PER PERSON**

**LAST CALL FOR TICKETS - ALL TICKET ORDERS MUST BE RECEIVED BY NOVEMBER 7, 2016**

✂ -----

NAME \_\_\_\_\_

ADDRESS \_\_\_\_\_

CITY \_\_\_\_\_ STATE \_\_\_\_\_ ZIP \_\_\_\_\_

NO. OF SEATS \_\_\_\_\_ @ \$25.00 EACH = TOTAL AMOUNT ENCLOSED \$ \_\_\_\_\_

PLEASE MAKE CHECK PAYABLE TO: LANCASTER CHAPTER, N.R.H.S.

MAIL TO: LANCASTER CHAPTER, N.R.H.S.

C/O THOMAS SHENK

11 MARQUIS COURT

LITITZ, PA 17543

INFORMATION:

TOM SHENK

OFFICE - 717-299-6600 ext. 504

CELL - 717-314-4448

**LANCASTER CHAPTER BOARD of DIRECTORS**

**PRESIDENT:** TOM SHENK 717-560-1186 TSHENK@NRHS1.ORG  
**1ST VICE PRESIDENT:** HAROLD SHAAK 717-484-4020 HSHAAK@NRHS1.ORG  
**2ND VICE PRESIDENT:** GLENN KENDIG 610-593-6313 GKENDIG@NRHS1.ORG  
**SECRETARY:** DONETTA EBERLY 717-866-5514 DEBERLY@NRHS1.ORG  
**TREASURER:** RICHARD RUTLEDGE 717-741-0205 RRUTLEDGE@NRHS1.ORG  
**EDITOR:** ED MAYOVER 302-834-3662 EMAYOVER@NRHS1.ORG  
**HISTORIAN:** TOM McMASTER 717-274-5325 TMcMASTER@NRHS1.ORG  
**CHAPLAIN:** DAVID STAMBAUGH 717-683-3053 CHAPLAIN@NRHS1.ORG  
**1ST DIRECTOR:** CINDY KENDIG 610-593-6313 CKENDIG@NRHS1.ORG  
**2ND DIRECTOR:** STEPHEN HIMPSL 717-285-4283 SHIMPSL@NRHS1.ORG  
**NATL REP & WEB:** FRED KURTZ 717-200-1551 FKURTZ@NRHS1.ORG

**MEMBERSHIP MEETING NOTICE**

THE ANNUAL BANQUET OF THE LANCASTER CHAPTER, N.R.H.S. WILL BE HELD AT THE HISTORIC REVERE TAVERN, 3063 LINCOLN HIGHWAY (U.S. ROUTE 30), PARADISE, PA. 17562 ON FRIDAY EVENING, NOVEMBER 18, 2016, STARTING AT 6:00 PM.

**LANCASTER CHAPTER  
 NATIONAL RAILWAY  
 HISTORICAL SOCIETY  
 10 RAILROAD AVENUE  
 CHRISTIANA, PA 17509-1416  
 PHONE: 610-593-4968**



**CHAPTER WEBSITE: WWW.NRHS1.ORG**

THE LANCASTER DISPATCHER IS PUBLISHED MONTHLY AS THE NEWSLETTER OF THE LANCASTER CHAPTER, NRHS AND IS E-MAILED TO EACH MEMBER OF THE CHAPTER AS ONE OF THE BENEFITS OF MEMBERSHIP. ANNUAL LANCASTER CHAPTER MEMBERSHIP DUES ARE \$20 PLUS \$12 IF YOU DESIRE A MAILED NEWSLETTER. NATIONAL NRHS DUES ARE MAILED SEPARATELY. OPINIONS AND POINTS OF VIEW EXPRESSED HEREIN ARE THOSE OF THE EDITOR, STAFF OR CONTRIBUTORS AND NOT NECESSARILY THOSE OF THE MEMBERSHIP, OFFICERS, OR THE NRHS. THE DEADLINE FOR ALL ITEMS SUBMITTED IS THE THIRD MONDAY OF THE PRECEDING MONTH. ADDRESS CHANGES OR CORRECTIONS SHOULD BE SENT TO: HAROLD SHAAK, P.O. BOX 813, ADAMSTOWN, PA 19501-0813 OR EMAIL: HSHAAK@NRHS1.ORG.

**PLEASE DELIVER PROMPTLY !!!  
 FIRST CLASS MAIL !!!**

*Forwarding and Address Correction Requested*

**LANCASTER CHAPTER, N.R.H.S.  
 10 RAILROAD AVENUE  
 CHRISTIANA, PA 17509-1416**

**FIRST  
 CLASS  
 MAIL**